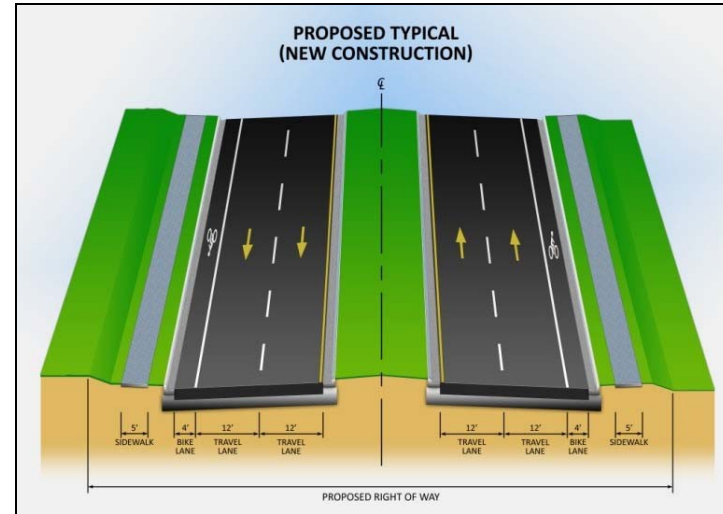


Typical Sections



SR 50 Realignment in Groveland

from County Road (CR) 565/Villa City Road to Brown Street

FPID: 427056-1-52-01

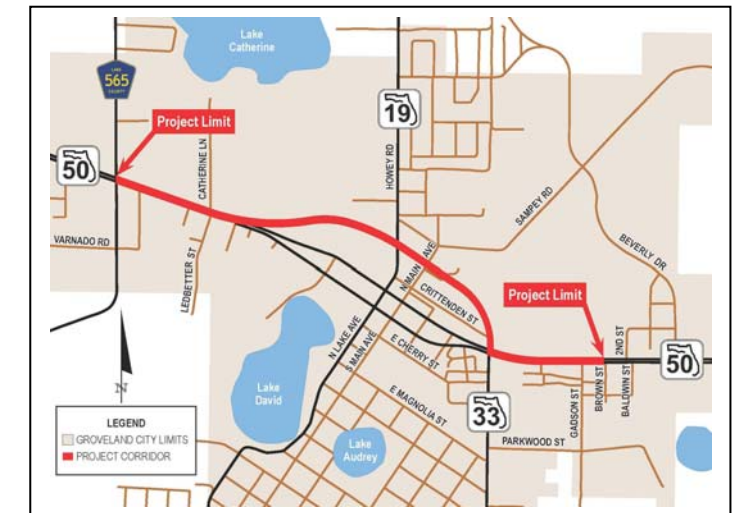
September 30, 2014

Project Overview

The Florida Department of Transportation (FDOT) completed the Project Development and Environment (PD&E) phase of this project in 2012, selecting the realignment option for design. The design phase is currently underway. It is during this phase that project details are finalized, resulting in a set of construction documents for the project.

The project's limits are from County Road (CR) 565/Villa City Road to Brown Street. Today, SR 50 goes through Downtown Groveland on a one-way pair (Broad Street west bound and Orange Street east bound). The design project is on existing SR 50 from Villa City Road to the western end of the one-way pair and from SR 33 (eastern end of the one-way pair) to Brown Street. The section from the western end of the one-way pair to SR 33 is on a new alignment, just north of Downtown Groveland. This project removes the heavy truck traffic from Downtown Groveland and creates the opportunity for a more walkable Downtown. Currently, the project is not funded for the remaining project phases of right-of-way acquisition and construction.

Location Map



Visit the project website:
www.grovelandSR50.com

Project Schedule

Project Activities	2013			2014			2015											
	A	M	J	A	S	O	N	D	J	F	M	A	M	J	J	A	S	O
Phase One	[Bar spanning from start of 2013 to end of 2013]																	
Survey and Right-of-Way Maps	[Bar spanning from start of 2013 to end of 2013]																	
Utility Coordination	[Bar spanning from start of 2013 to end of 2013]																	
Update Background Information	[Bar spanning from start of 2013 to end of 2013]																	
Line and Grade Plans	[Bar spanning from start of 2013 to end of 2013]																	
Pond Siting Report	[Bar spanning from start of 2013 to end of 2013]																	
Preliminary Engineering & Design	[Bar spanning from start of 2013 to end of 2013]																	
Phase Two	[Bar spanning from start of 2014 to end of 2014]																	
Initial Roadway Plans	[Bar spanning from start of 2014 to end of 2014]																	
Permitting	[Bar spanning from start of 2014 to end of 2014]																	
Public Meeting #1	[Bar spanning from start of 2014 to end of 2014]																	
Phase Three	[Bar spanning from start of 2015 to end of 2015]																	
Final Roadway Plans	[Bar spanning from start of 2015 to end of 2015]																	
Public Meeting #2	[Bar spanning from start of 2015 to end of 2015]																	
Finalize Plans & Complete Design Tasks	[Bar spanning from start of 2015 to end of 2015]																	

Currently, right-of-way acquisition and construction are not funded.

Want to Know More?

You may contact either the FDOT Project Manager or the Consultant Project Manager for additional project information.

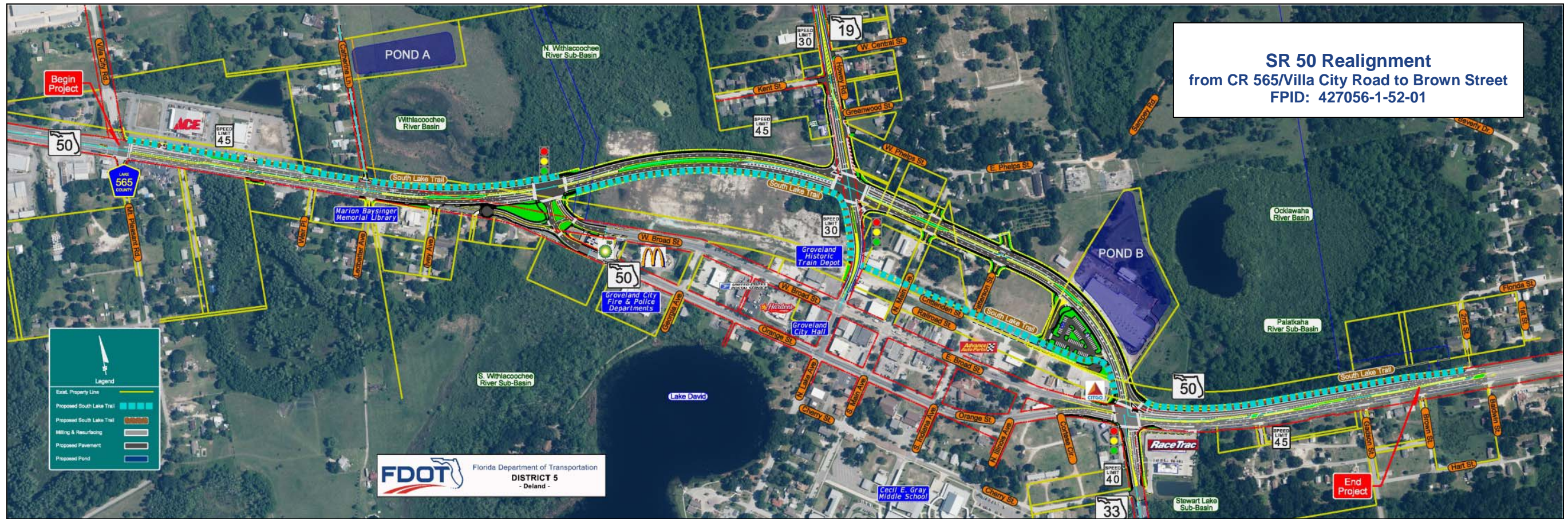
FDOT Project Manager

Mr. Kevin Moss, P.E.
 Florida Department of Transportation – District Five
 719 South Woodland Boulevard
 DeLand, Florida 32720-6834
 (386) 943-5255
 kevin.moss@dot.state.fl.us

Consultant Project Manager

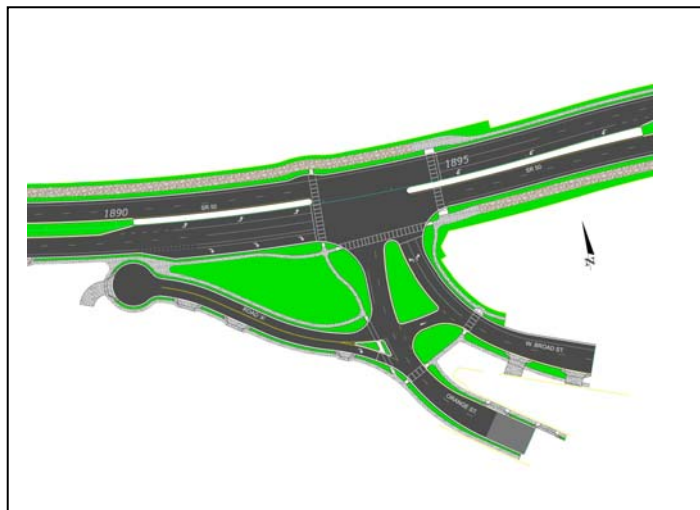
Mr. Gene Quinn, P.E., P.L.S.
 Volkert, Inc.
 3501 South Main Street, Suite 2
 Gainesville, Florida 32601
 (352) 240-7461
 gene.quinn@volkert.com

SR 50 Realignment and the South Lake Trail

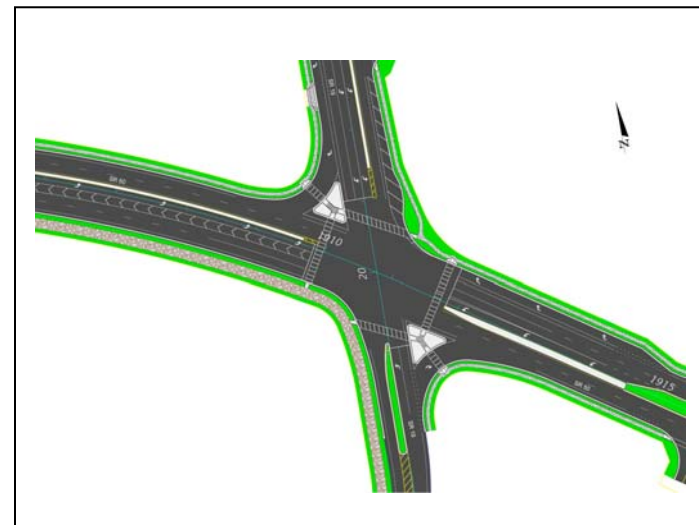


Intersection Details

SR 50 and Orange/Broad Streets



SR 50 and SR 19



SR 50 and SR 33

